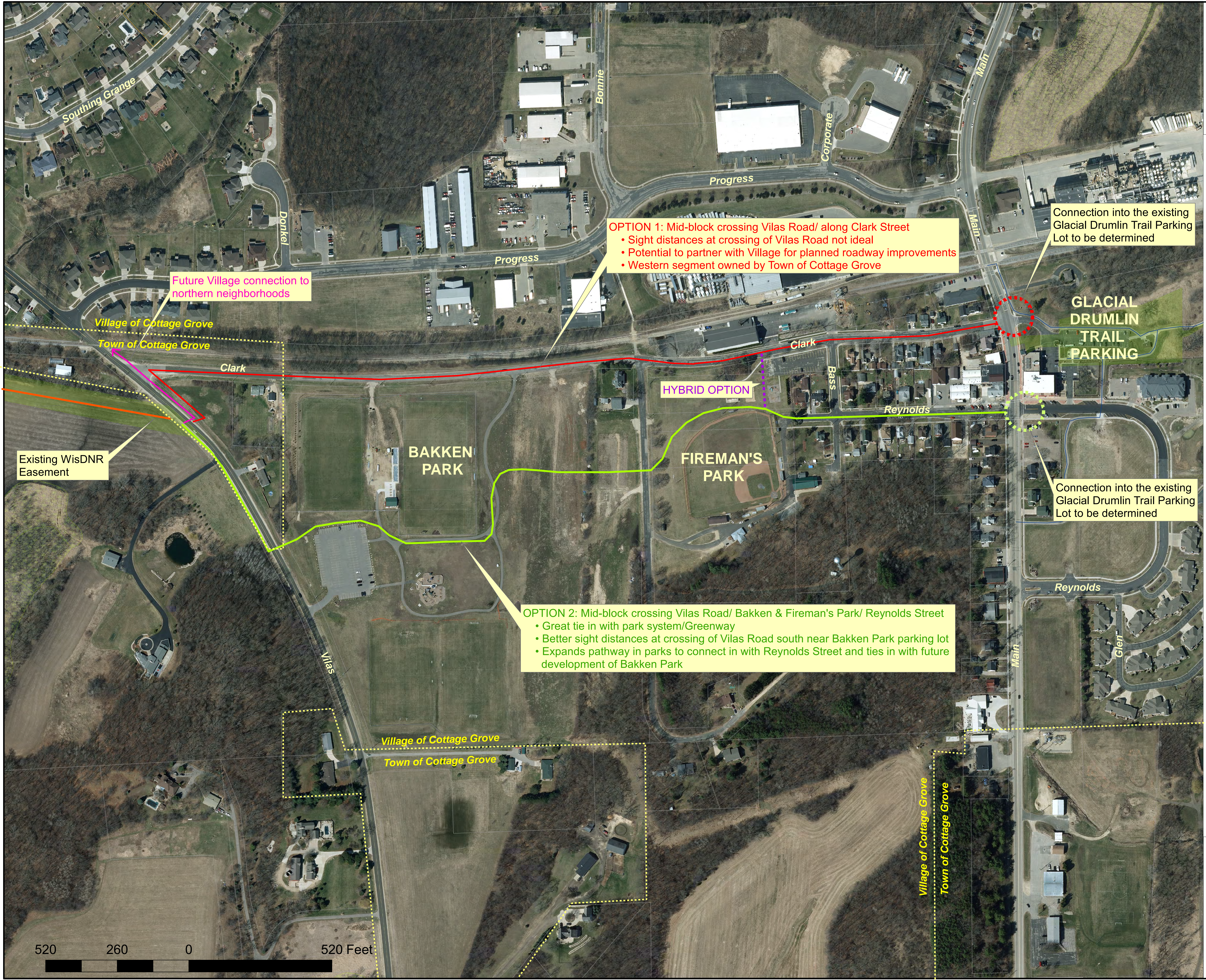


# Glacial Drumlin Trail

WisDOT ID #5556-02-00  
 Village of Cottage Grove  
 Alternative Overview



**OPTION 1: Mid-block crossing Vilas Road/ along Clark Street**

- Sight distances at crossing of Vilas Road not ideal
- Potential to partner with Village for planned roadway improvements
- Western segment owned by Town of Cottage Grove

Connection into the existing Glacial Drumlin Trail Parking Lot to be determined

Future Village connection to northern neighborhoods

Village of Cottage Grove  
 Town of Cottage Grove

Existing WisDNR Easement

HYBRID OPTION

Connection into the existing Glacial Drumlin Trail Parking Lot to be determined

**OPTION 2: Mid-block crossing Vilas Road/ Bakken & Fireman's Park/ Reynolds Street**

- Great tie in with park system/Greenway
- Better sight distances at crossing of Vilas Road south near Bakken Park parking lot
- Expands pathway in parks to connect in with Reynolds Street and ties in with future development of Bakken Park

Village of Cottage Grove  
 Town of Cottage Grove

Village of Cottage Grove  
 Town of Cottage Grove

